



# AUTOMOTIVE, INDUSTRIAL ANALOG



LED Drivers  
Audio Amplifiers



# Analog Semiconductors for Automotive, Industrial, IoT, and Consumer Appliances



ISSI is not only a memory company. We also offer a wide selection of analog semiconductors for the automotive, consumer and industrial markets.

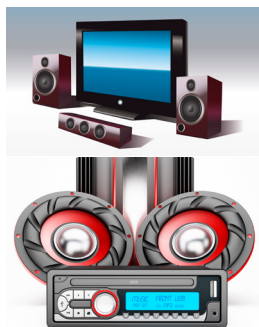
Our Analog IC portfolio consists of five product segments; HBLED, FxLED, Backlight, Audio and Sensor; many qualified to AEC-Q100 to meet the automotive segment requirements.

“We strive to empower our customers with innovative analog solutions.”



## LED DRIVERS

- Wide Selection
  - Linear
  - Switching
  - Multi-String
  - TRIAC Dimmable
- Protection Features
- Automotive, Industrial, Bulb Retrofit



## AUDIO AMPLIFIER

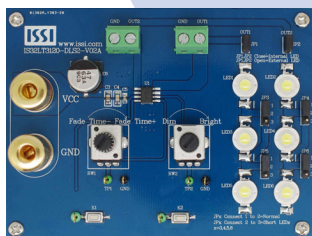
- Wide Selection
  - Class -AB, -D, -G
  - 1W to 80W
  - Differential or I2S
- Cross to industry standard devices
- Consumer, Industrial and Automotive



## FXLED DRIVERS

- Tiny Packages, Bold Colors
- Offload MCU with Advanced PWM Functions
- Low Power, Robust Operation
- IoT, Wearable, Automotive

# Evaluation Boards & IC Samples On Demand



ISSI offers general-purpose circuit boards to simplify evaluation of the analog ICs, as well as to provide a building block for application circuit development.

Contact your local ISSI sales representative to discuss your evaluation board and IC sample requirements for your next application.



Visit [www.issi.com](http://www.issi.com) for a complete list of analog devices.

## LED DRIVER - AUTOMOTIVE

Device	Description
IS32LT3120	Map/Dome Light, Fade IN/OUT
IS32LT3122	2-CH, Fault Flag, PWM Dim
IS32LT3171	SOT-23, Adj 150mA, PWM Dim
IS32LT3180	8-CH, Fault Flag, Dual Intensity
IS32BL3554	4-CH@ 1.5% Accuracy, 180mA/CH
IS32LT3953	3A, 2Mhz Buck, Spread Spectrum

## LED DRIVER - FxLED

Device	Description
IS31FL3193	1-RGB, Auto Fade, Preset Patterns
IS31FL3199	3-RGB, Auto Fade, Audio Sync
IS31FL3216	16-CH, 8 Memory Frames, Audio
IS31FL3236	36-CH, 256 PWM steps
IS31FL3726	16-CH, Serial Shift, Cascadable
IS31FL3731	9x9 Matrix, Memory Frames, Audio
IS31FL3732	IS31FL3731+ Sync up to 8 with 16 address

## LED DRIVER - HBLED

Device	Description
IS31LT3117	4-CH, 350mA/CH, Low Side CCR
IS31LT3350	750mA, SOT-23, Hysteretic Buck
IS31LT3360	1.2A, SOT-23, Hysteretic Buck
IS31LT3515	35VDC Buck/Boost Converter
IS31LT3932	AC/DC, True Constant Current
IS31LT3935	AC/DC, TRIAC Dimmable
IS31LT3948	DC/DC Boost converter

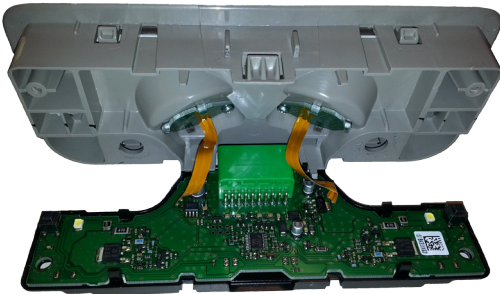
## AUDIO AMPLIFIER

Device	Description
IS31AP4088	Class-AB, 2-CH, 2.6W, 2.7-5.5V
IS31AP4833	3D, Tone Ctrl, I2C, 2.8W, 3 - 5.5V
IS31AP4991	Class-AB, Mono, 1.1W, 2.7-5.5V
IS31AP2010	Class-D, Filter-less, 3W, 2.7-5.5V
IS31AP2110	Class-D, Stereo, 20W, 8-26V
IS31AP4915	Class-G, 20VP-P, 2.5-5.5V

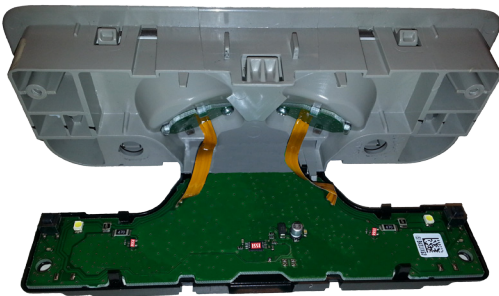
# Application Example



**Automotive LED  
Map/Dome Light**



**Complex Design**



**ISSI Simplified  
IS32LT3120 &  
IS32LT3170**

## CONTACT INFORMATION:

1623 Buckeye Drive, Milpitas, CA 95035

Tel: 408-969-6600 | [dram@issi.com](mailto:dram@issi.com) | [sram@issi.com](mailto:sram@issi.com) | [analog@issi.com](mailto:analog@issi.com) |  
[flash@issi.com](mailto:flash@issi.com) | [imm@issi.com](mailto:imm@issi.com) | [www.issi.com](http://www.issi.com)