



INTEGRATED SILICON SOLUTION, INC.

CDP (Carbon Disclosure Project)

The CDP (Carbon Disclosure Project) is a not-for-profit charity that runs the global disclosure system for investors, companies, cities, states and regions to manage their environmental impacts. The world's economy looks to CDP as the gold standard of environmental reporting with the richest and most comprehensive dataset on corporate and city action. Via CDP, ISSI can align the targets and share the results of greenhouse gas (GHG) emission with customers and suppliers.

According to ISSI worldwide policy, ISSI setups the target to align with Paris Agreement (global warming < 1.5°C) and EU requirements for greenhouse gas (GHG) emission as below.

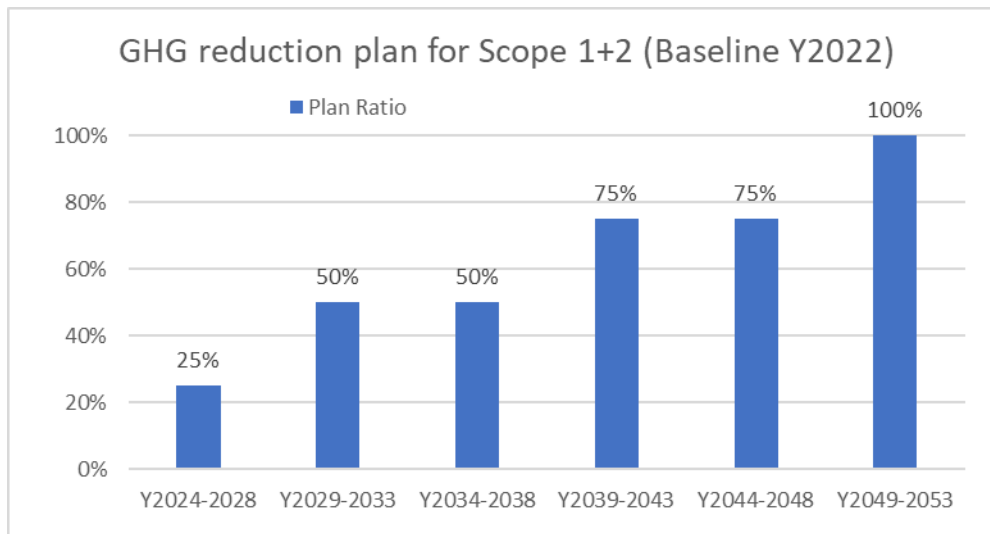
Support Paris Agreement (global warming < 1.5°C) to reduce greenhouse gas (GHG) emission 50% by Y2030 and to reach net zero by Y2050 for Scope 1 (direct emission) and Scope 2* (Imported electricity)*

*Scope 1: Direct emissions and removals in ISSI (natural gas combustion, fuel, refrigerant, cesspool...)

Scope 2: Imported electricity in ISSI

Scope 3: Indirect emissions for product manufacture/sale needs, included manufacture, waste treatments, etc.

GHG Reduction Plan is shown as below.

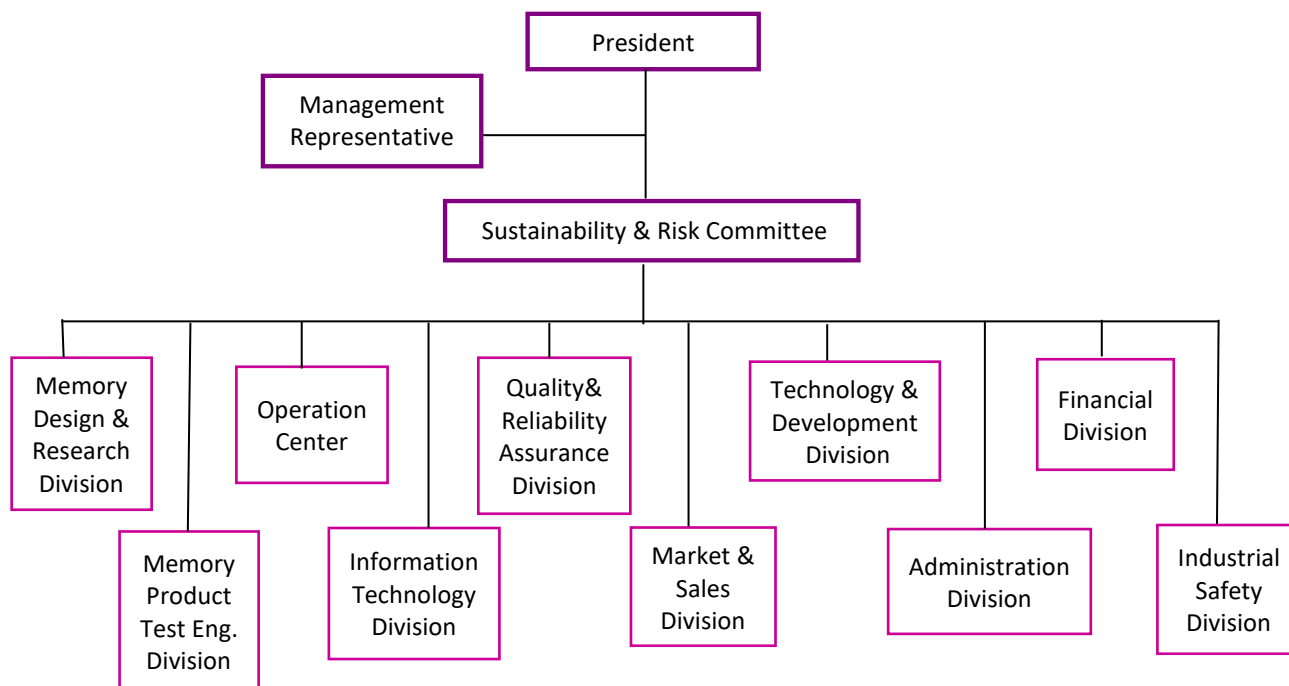


CDP reports are summarized in below table, and the details are shown in Appendix.

Y2022 - Location base: Taiwan + US	Scope 1 Direct emissions	Scope 2 Imported electricity	Scope 3 Indirect emissions	Sum
GHG emission (ton CO2e/year)	172.24	763.98	4,265.01	5,201.23
Ratio (%)	3.31%	14.69%	82.00%	100%

Audit by ISO 14064-1: International Standard for GHG Emissions Inventories and Verification

ISSI sets up the environmental strategy and organization based on TCFD (Task Force on Climate-related Financial Disclosures) as below Figure. It's included the risk, opportunity, and transition plan for climate change.



Appendix: Details of Y2022 Emission

Table 1. Summary Table

Category	Subcategorization	Total GHG Emission (tonCO ₂ e/yr)								Share of Single Scope Emissions (%)	Share of Total Emissions (%)
		CO ₂	CH ₄	N ₂ O	HFCs	PFCs	SF ₆	NF ₃	Total CO ₂ e		
Scope 1 - Direct GHG emissions and removals	Stationary Combustion	123.2868	0.0000	0.0000	0.0000	0.0000	0.0000	0.0000	123.2868	71.58%	2.37%
	Mobile Combustion	7.6186	0.0767	0.2401	0.0000	0.0000	0.0000	0.0000	7.9354	4.61%	0.15%
	Fugitive Emissions	0.0000	9.2634	0.0000	31.7501	0.0000	0.0000	0.0000	41.0135	23.81%	0.79%
Scope 2 - Indirect GHG emissions from imported electricity	Imported Electricity	763.9845							763.9845	100.00%	14.69%
Scope 3 - Indirect GHG emissions	Purchased Goods (fabrication of the product)	4,246.6954							4,246.6954	99.57%	81.65%
	Disposal of Solid and Liquid Waste	18.3126							18.3126	0.43%	0.35%
Total		5,159.8979	9.3401	0.2401	31.7501	0.0000	0.0000	0.0000	5,201.228		100.00%
Share of Total Emissions (%)		99.21%	0.18%	0.00%	0.61%	0.00%	0.00%	0.00%	100.00%		

Table 2. Clean Energy in Scope 2 - Imported electricity

No.	Organizational Site	Imported electricity (kWh)	Ratio
1	Hsinchu Headquarters	1,500,951.90	70.59% in ISSI
	<i>Nuclear Energy in Hsinchu</i>	<i>137,187.00</i>	<i>9.14% in Hsinchu</i>
2	U.S. Office	625,376.90	29.41% in ISSI
	<i>Green Energy (Solar/wind) in US</i>	<i>625,376.90</i>	<i>100% in US</i>
Total ratio of clean energy (no GHG emission)			35.86% in ISSI

Table 3. Fuel for Heater in Scope 1

No.	Organizational Site	Fuel for Heater
		Natural Gas (non-green power, kWh)
1	Hsinchu Headquarters	0
2	U.S. Office	681,566.39